



TalkBroadband®

Quick Start Guide

Quick Start Guide

Start Here

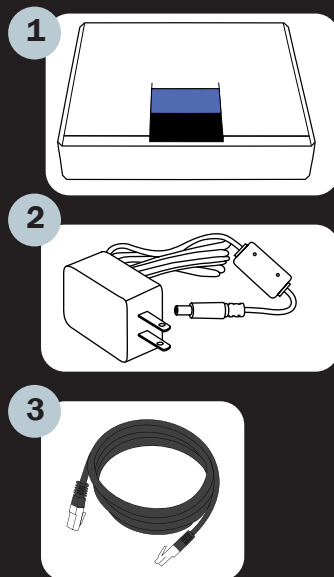
This Quick Start Guide covers the two most common setups. Please refer to the Manual (<http://www.talkbroadband.ca/en/manual>) for more information on how to configure the SPA for more advanced network configurations.

I. Checklist

Package Contents:

- 1 Linksys Gateway SPA2100-SU
- 2 Power Adapter
- 3 Ethernet Cable

A working Internet connection



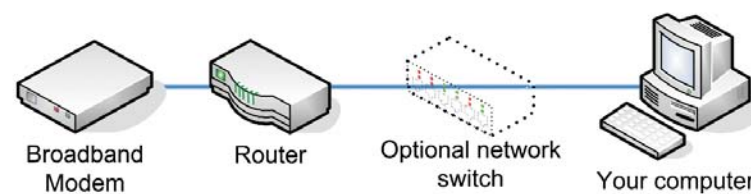
II. Setup - Choose **A** or **B**

Info: If your network is configured to use static IP addressing, please consult the **Advanced Setups** section of the Manual. <http://www.talkbroadband.ca/en/manual>

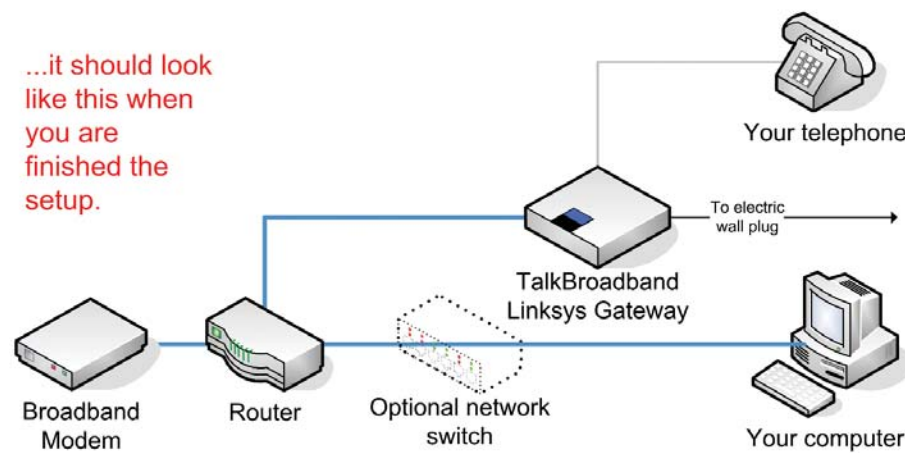
If you want to use your existing home telephone wiring with TalkBroadband, please consult <http://www.talkbroadband.ca/homewiring>

A EXISTING ROUTER

If your network looks like this when you start...



...it should look like this when you are finished the setup.

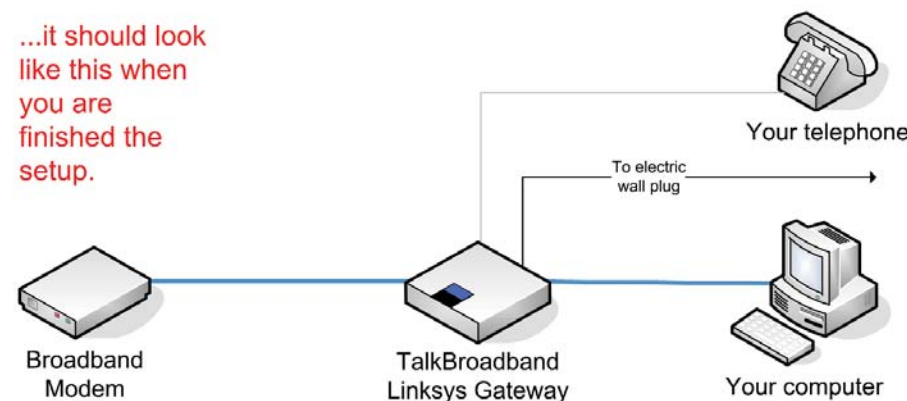


B NO EXISTING ROUTER

If your network looks like this when you start...

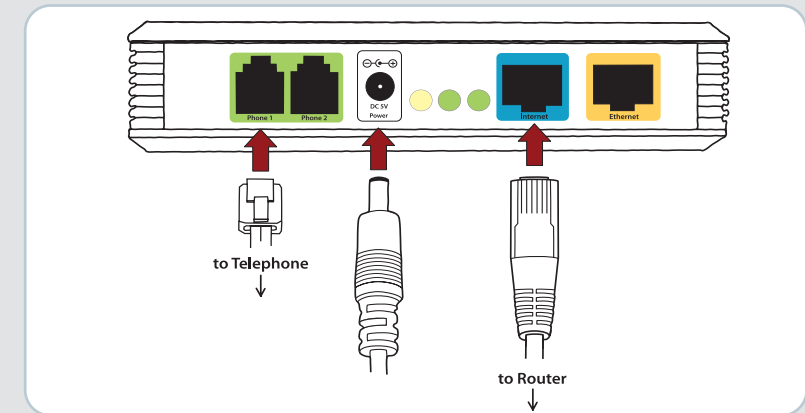


...it should look like this when you are finished the setup.



1. **Shut down** your computer and unplug your modem and router power adapters.

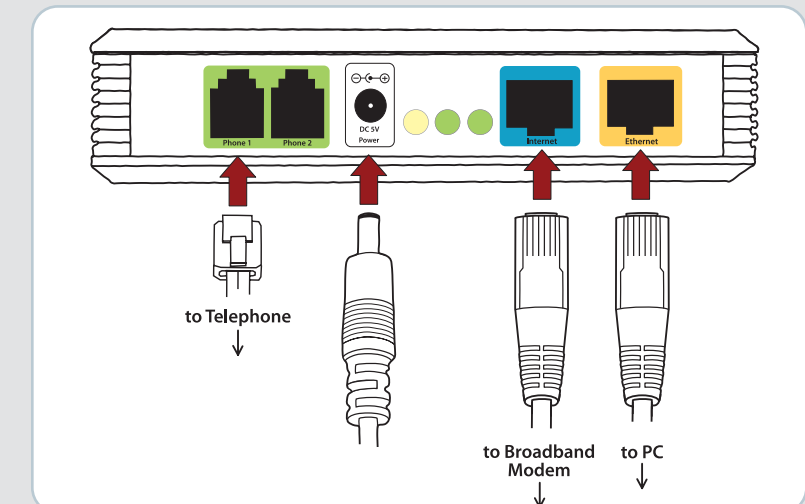
2. **Connect:**



- a. an Ethernet cable from a router Ethernet LAN port to the **blue INTERNET port** on the Linksys Gateway
 - b. your telephone to the **green PHONE 1 port** on the Linksys Gateway
3. **Plug in:**
- a. the Linksys Gateway power adapter
 - b. the modem's power adapter
 - c. the router's power adapter
4. **Start** your computer.
5. **Once the green Phone 1 light turns on, you are ready to start making calls!** (This could take up to 2 minutes.)

1. **Shut down** your computer and unplug your modem's power adapter.

2. **Connect:**



- a. an Ethernet cable from the modem to the **blue INTERNET port** on the Linksys Gateway
 - b. an Ethernet cable from the **yellow ETHERNET port** on the Linksys Gateway to your computer
 - c. your telephone to the **green PHONE 1 port** on the Linksys Gateway.
3. **Plug in:**
- a. the Linksys Gateway power adapter
 - b. the modem's power adapter.
4. **Follow the instructions** for the **TYPE** of High Speed Internet connection you have:
- a. **CABLE**
 - i. Start your computer, open a browser window. If you cannot browse the Internet, double check cabling. If cabling is correct, consult MAC Address Issues in the manual.
 - b. **DSL**
 - i. Start your computer, open a browser window, type "192.168.0.1" into the address field and press the **Enter** key.
 - ii. When prompted, enter "user" for the **Username** and "primus" for the **password** and press the **Enter** key.
 - iii. Click on **Router** and then on **WAN Setup**.
 - iv. Enter your ISP-supplied PPPoE username and password in the **PPPoE Login** and **PPPoE Login Password** fields, respectively.
 - v. Click **Submit All Changes** to save your changes.
 - vi. In your browser window, ensure that you can browse the Internet.
5. **Once the green Phone 1 light turns on, you are ready to start making calls!** (This could take up to 2 minutes.)

Have More Questions?

<http://support.primus.ca>

Residential Technical Support
1-800-370-0015

Commercial Technical Support
1-888-222-8577